



- 2018 Lewis Anchorage Australia Day Regatta

Oz Day Sailing Instructions 2018

Start times TBC each day at Race Briefing, and may be altered. Monitor VHF 77

Thursday 25th Jan 2018

Welcome visiting boats

Friday 26th Jan 2018

Tides H 10:16 - 0.61m, L 16:15 - 1.32m

- 08:00 Breakfast at WYC club
- 11.30 Registration and Briefing at the WYC Club Building
- 12.30 Race 1 start time
- 14:00 to 14:15 Biplane display
- 15:00 Race 2 start time
- 18.00 approx - Presentation
- 21.00 Fireworks

Saturday 27th Jan

Tides H 11:33 - 0.53m, L 17:31 - 1.32m

- 08:00 Breakfast at club
- 10:00 Briefing in the WYC Club
- 11:00 Race 3 start time
- 14:00 Race 4 start time
- 16:30 Presentation

Sunday 28th Jan

Tides H 12:44 - 0.42m, L 18:41 - 1.35m

- 08:00 Breakfast at club
- 10:00 Briefing in the WYC Club
- 11:00 Race 5 start time
- 14:30 Regatta Presentation & Trophy lunch

Regatta Entry Fee Per Boat -

\$70 if paid online before 26th January

\$85 if paid at the regatta briefing by Credit Card

Entry fee for individual day \$35 paid at the briefing by CC

Skippers Notes:

Race	Course	Start Time	Finish Time	Notes
1				
2				
3				
4				
5				

Sailing Instructions

1 RULES

The regatta will be governed by the rules as defined in the ISAF The Racing Rules of Sailing and the prescriptions and special regulations of Yachting Australia (YA).

2 NOTICES TO COMPETITORS

Notices to competitors will be by VHF radio channel 77. Please ensure that you monitor this frequency at all times.

All boats shall monitor VHF channel 16 in addition to Channel 77.

3 CHANGES TO SAILING INSTRUCTIONS

Any change to the sailing instructions will be advised at the pre-race briefings. If a course is to be shortened this will be advised by VHF 77

4 SIGNALS MADE ASHORE

No signals will be made ashore

5 RACE BRIEFING

A Compulsory Sign On and race briefing will be conducted at **11:30am** on Friday Australia Day .Failure to comply will result in the competitor being marked DNS.

Saturday and Sunday briefings at **10:00am** each day. Attendance at these race briefings by a representative of each competitor is not compulsory but advised.

6 START TIMES

Start times will be confirmed at the pre race briefing, and any changes announced on VHF 77

7 THE COURSE

Courses are as described in this booklet. The course numbers for the day shall be advised at the race briefing.

8 MARKS

Marks will be as described in the List of Marks attached to these instructions

9 THE START

Races will be started by using rule 26 with the **warning signal made 5 minutes 4 minutes and 1 minute before the starting signal.**

10 CHANGES TO THE COURSE

If required due to weather conditions, the race officer will change the course.

If this occurs boats will be notified by VHF 77.

11 TIME LIMITS

If no boat has finished by 90 min after the start time the race will be abandoned. Failure to meet the target time will not be grounds for redress. This changes rule 62.1(a). Boats failing to finish within 120 minutes after the start time will be scored DNF. This changes rules 35, A4 and A5.

12 SCORING SYSTEMS

Low point scoring system will apply.

13 DISCARDS

Each boat may discard one race.

14 SAFETY REGULATIONS

Check-Out and Check-In: Competitors shall notify the race committee at the race briefing of their intention to race by completing a sign on form.

A boat that retires from a race shall notify the race committee as soon as possible by VHF radio.

Each yacht shall be equipped to comply with the YA Special Regulations as follows:

Championship Series and Australia Day Regatta	CAT 6
---	-------

In addition to CAT 6 requirements each boat shall carry:

<u>Item</u>	<u>YA Regulation</u>
Bilge pump (if LOA >8m)	3.20.6
Compass	3.21.1
Chart of the area	4.10.1
Lifebuoy (without light)	4.21.1
Red hand flares (2)	4.22
Orange smoke signals (2)	4.22
Distress sheet	4.27.1

All yachts to be equipped with VHF radio transmitter in accordance with YA Regulation 3.25.

The race committee may impose a higher category requirement for a particular race at their absolute discretion.

15 ADVERSE WEATHER CONDITIONS

In the event of a current gale warning being issued by the Bureau of Meteorology, or the race committee considers the conditions unsuitable, the race shall be abandoned or postponed.

16 INTERFERENCE WITH COMMERCIAL SHIPPING

Competitors shall maintain safe clearance to commercial shipping using Port Kembla.

17 EQUIPMENT AND MEASUREMENT CHECKS

A boat or equipment may be inspected at any time for compliance with the class rules and sailing instructions. On the water, a boat can be instructed by a race committee equipment inspector or measurer to proceed immediately to a designated area for inspection.

18 OFFICIAL BOAT

WYC boat "Trim" is the official boat.

19 TRASH DISPOSAL

Boats shall not put trash in the water.

20 RADIO COMMUNICATION

Except in an emergency, a boat shall neither make radio transmissions while racing nor receive radio communications not available to all boats. This restriction also applies to mobile telephones.

21 DISCLAIMER OF LIABILITY

Competitors participate in the regatta entirely at their own risk. See rule 4, Decision to Race.

By way of entering, competitors acknowledge and agree that participation in the event can be dangerous and accept their participation is at their exclusive risk in every respect. Further, by way of entering competitors shall hold harmless the organising authority, its officers, members, servants, and agents and all other competitors in respect of all liability for injury to their person and or loss or damage to their property whatsoever arising from their participation or intended participation in the event and acknowledge and accept that the organising authority, its officers, members, servants, and agents and all other competitors accept no responsibility in respect to the loss of life, person injury or loss or damage to property which may be sustained by reason of a competitors participation or intended participation in the event or arising for whatever reason in connection with the event.

The organizing authority will not accept any liability for material damage or personal injury or death sustained in conjunction with or prior to, during, or after the regatta.

22 INSURANCE

Each participating boat shall be insured with valid third-party liability insurance with a minimum cover of \$5,000,000.00 per event or the equivalent.

Contact Numbers

VHF Contacts

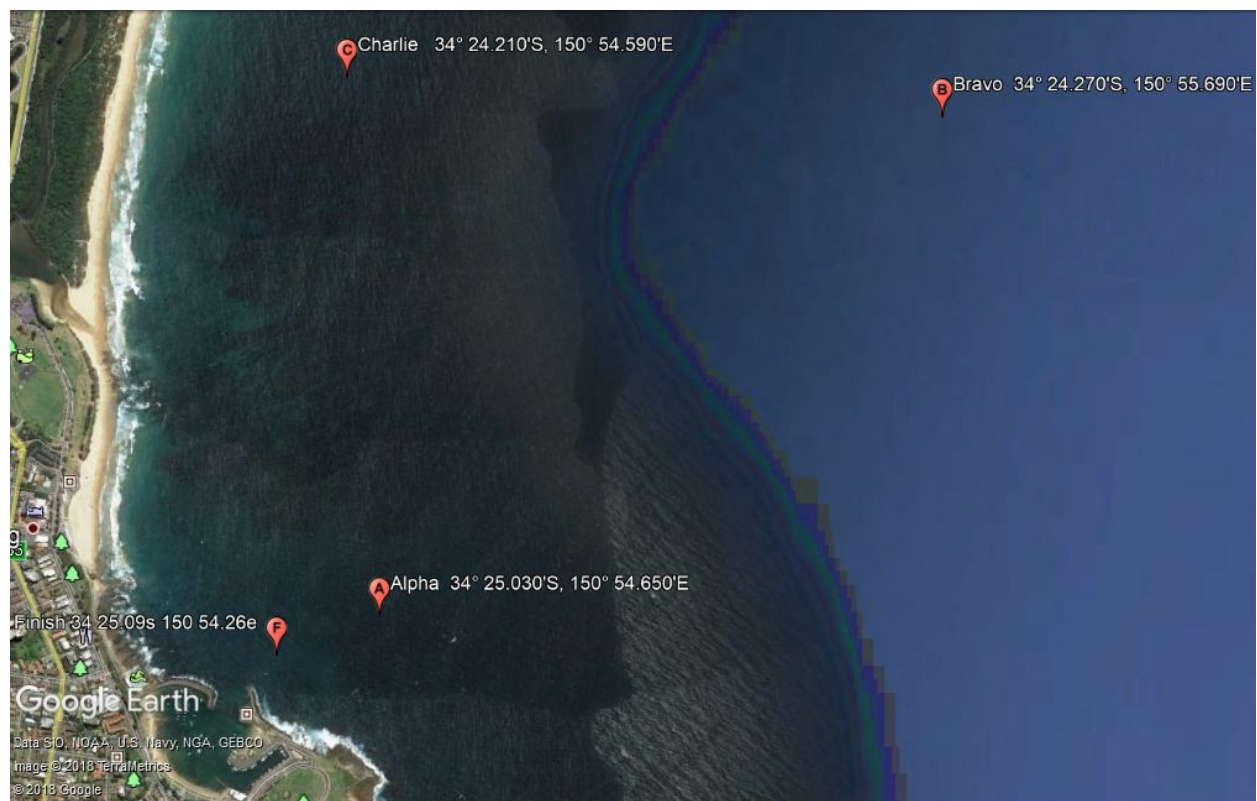
Distress and general call	16
<i>WYC club working channel</i>	<i>77</i>
Port Kembla Port Authority Traffic Control	11

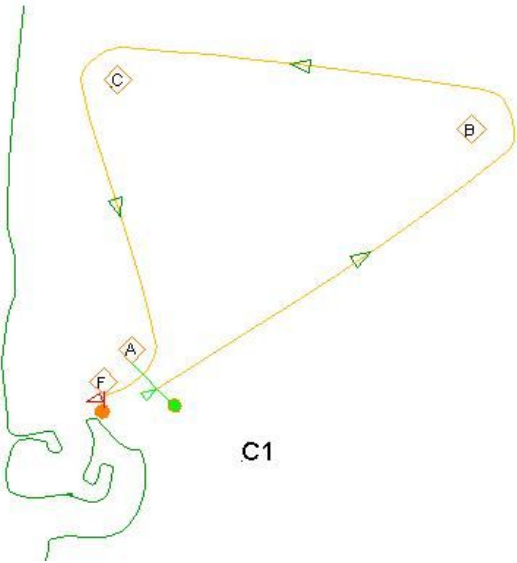
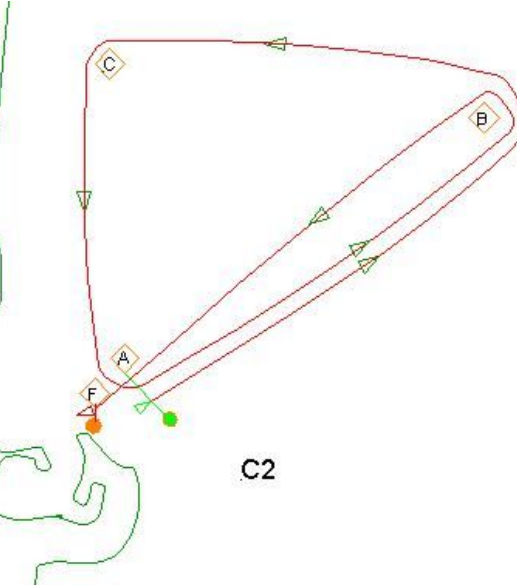
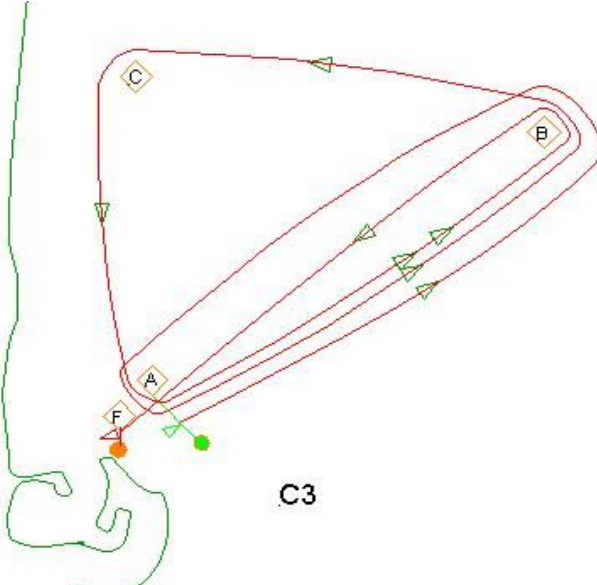
Phone Contacts

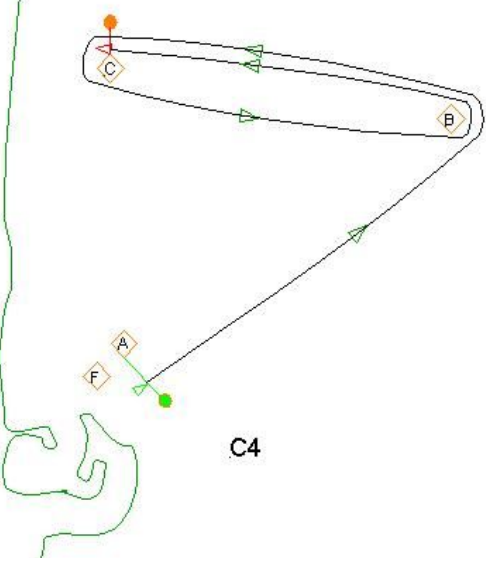
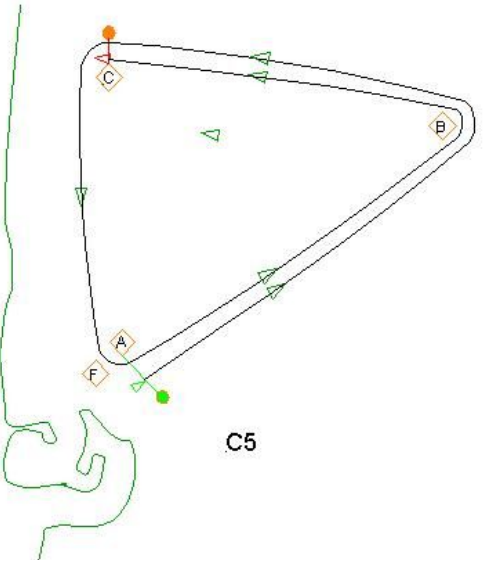
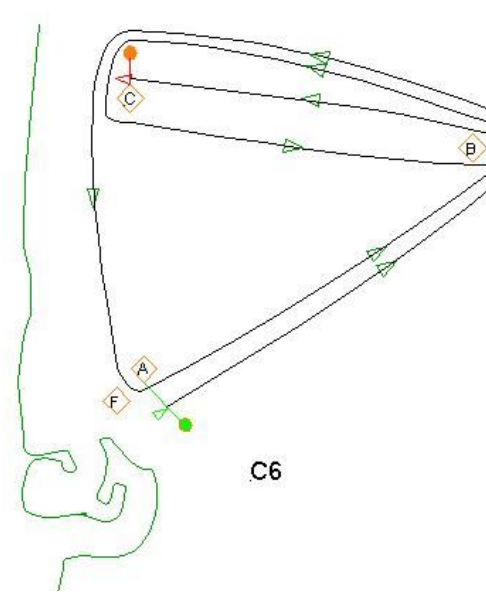
Club Captain	John	0417338884
Port Kembla Water Police	02 4276 5180	
	or 000 in emergency	
Marine Rescue Port Kembla	02 4274 4288	
Port Kembla Port Authority Traffic Control	02 42744571	
NSW Maritime BSO	Mobile	0419 751 852
	Office	02 4274 7914

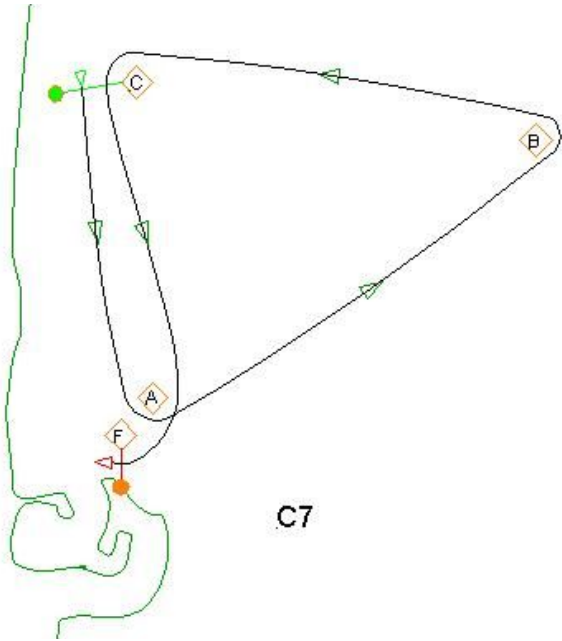
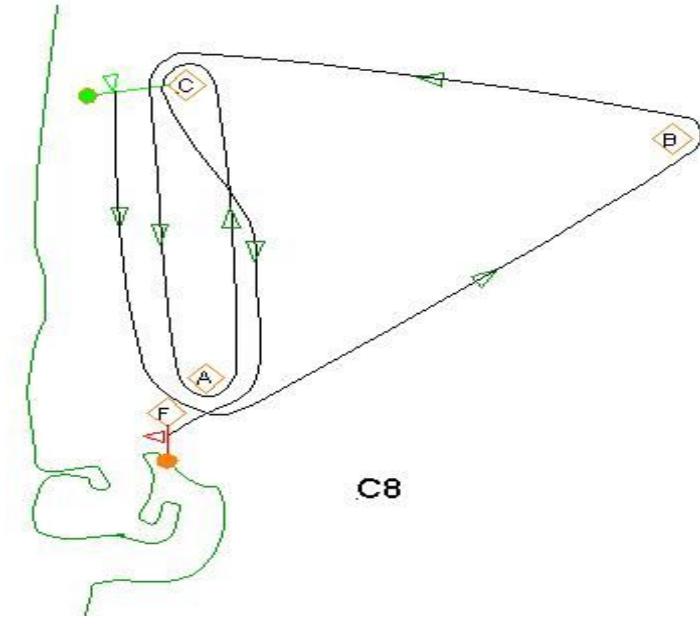
List of Marks

Mark	Description	Latitude	Longitude
Start Line	A line from committee boat to the nominated start mark eg Alpha Buoy.		
Normal Finish Line	A line from finish buoy to Northern tip of WYC Clubhouse		
Special Finish Line	A line from Committee boat to the nominated mark		
Finish Mark	Orange Spherical Buoy at seaward end of the normal finish line transit	34° 25.09'S	150° 54.46'E
Alpha	Orange Cylindrical Buoy approx 300m East of Finish Mark	34° 25.03'S	150° 54.65'E
Bravo	Orange Cylindrical Buoy approx. 1.2 nautical miles NE of Mark Alpha	34.24.27 S	150.55.69E
Charlie	Orange Cylindrical Buoy approx. 0.8 nautical miles N of Mark Alpha	34.24.31S	150.54.59E



1	3.5 nm	Start (Alpha to Port) Bravo (Port) Charlie (Port) Alpha (Starboard) Finish (Starboard)	 <p>C1</p>
2	6 nm	Start (Alpha to Port) Bravo (Port) Charlie (Port) Alpha (Port) Bravo (Port) Alpha (Starboard) Finish (Starboard)	 <p>C2</p>
3	9nm	Start (Alpha to Port) Bravo (Port) Alpha (Port) Bravo (Port) Charlie (Port) Alpha (Port) Bravo (Port) Alpha (Starboard) Finish (Starboard)	 <p>C3</p>

Course	Approx. distance	Mark (leave to)	
4	4nm	Start (alpha to Port) Bravo (Port) Charlie (Port) Bravo (Port) Special Finish, (Charlie to Port)	
5	6nm	Start (alpha to Port) Bravo (Port) Charlie (Port) Alpha (Port) Bravo (Port) Special Finish, (Charlie to Port)	
6	9nm	Start (alpha to Port) Bravo (Port) Charlie (Port) Alpha (Port) Bravo (Port) Charlie (Port) Bravo (Port) Special Finish, (Charlie to Port)	

Course	Approx. distance	Mark (leave to)	
7	4nm	Start (Charlie to Port) Alpha (Port) Bravo (Port) Charlie (Port) Alpha (Starboard) Finish(Starboard)	
8	6nm	Start (Charlie to Port) Alpha (Port) Bravo (Port) Charlie (Port) Alpha (Port) Charlie (Port) Alpha (Starboard) Finish(Starboard)	
9	9nm	Start (Charlie to Port) Alpha (Port) Bravo (Port) Charlie (Port) Bravo (Port) Charlie (Port) Alpha (Port) Bravo (Port) Charlie (Port) Alpha Starboard Finish(Starboard)	